

Safety impact assessment – methodology and main results

Main results

- Considerable savings in numbers of fatalities
- Considerable savings in numbers of injuries
- Comprehensive method covering all safety impacts
- Four main factors explaining the impacts
- Significant potential to improve traffic safety

Safety mechanisms

Crash risk

1. Direct in-car modification of the driving task
2. Direct influence by roadside systems
3. Indirect modification of user behaviour
4. Indirect modification of non-user behaviour
5. Modification of interaction between users and non-users

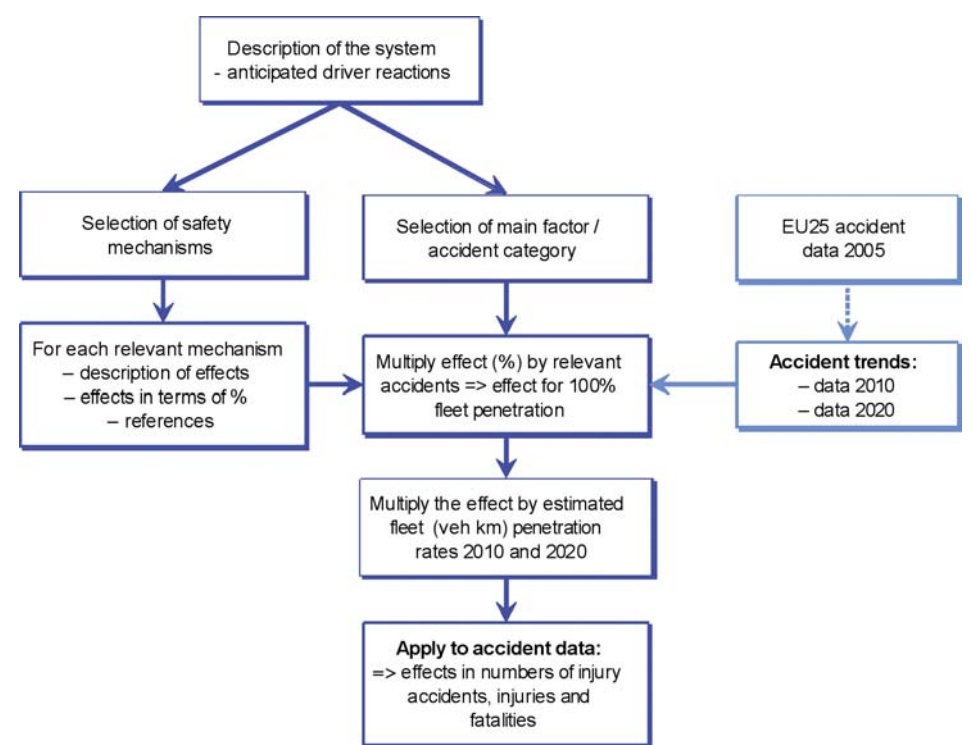
Exposure

6. Modification of road user exposure
7. Modification of modal choice
8. Modification of route choice

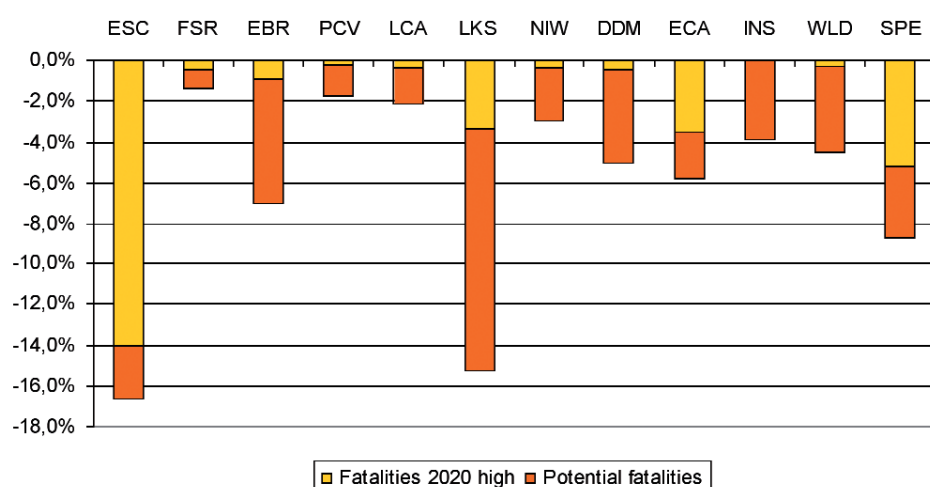
Risk of fatal injuries in crash

9. Modification of accident consequences

How were the results achieved?



Significant potential to improve traffic safety



Estimated effects on fatalities in 2010 and 2020

